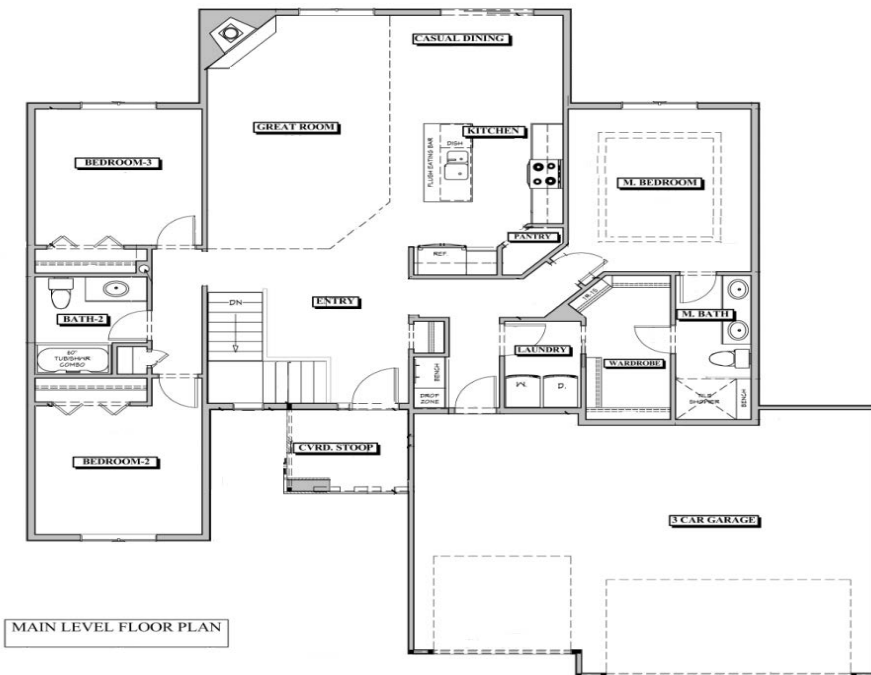




**Jon McCormick**  
 (402) 306-2217  
**Rod Schram**  
 (402) 972-7001

*Any aspect of this home can be customized to fit the way you live!*



**Introducing the "Emily II"**

Base House

**\$226,950 + LOT**

Main Level – 1586 Sq. Ft.  
 Unfinished Lower Level – 1485 Sq. Ft.  
 Optional Lower Level – 1200 Sq. Ft.

**Kohler Total Home Builder**

- All plumbing fixtures are Kohler

**GE Stainless Appliances**

**Ferguson Supply**

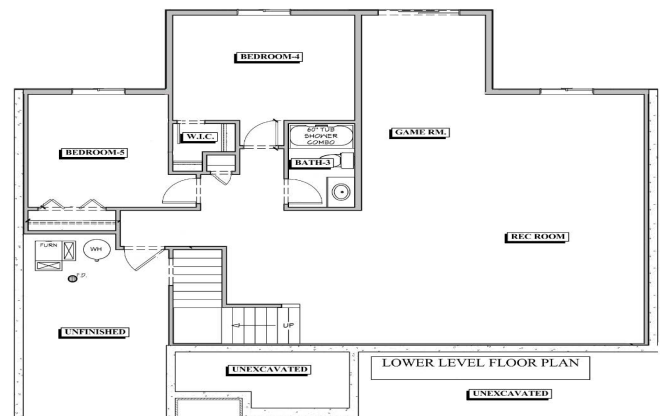
- Plumbing and lighting fixtures

**CKF**

- Cabinets, Granite, Onyx

**ProSource Flooring**

- Carpet, Tile, Wood



[www.dynastyhomesomaha.com](http://www.dynastyhomesomaha.com)

**the BEERS TEAM**

**Matt Beers • 402.681.5420**

402.697.4265 | [www.HouseHuntingOmaha.com](http://www.HouseHuntingOmaha.com) | [beers.team@cbshome.com](mailto:beers.team@cbshome.com)

**CBSHOME**

*Your friends in real estate!*